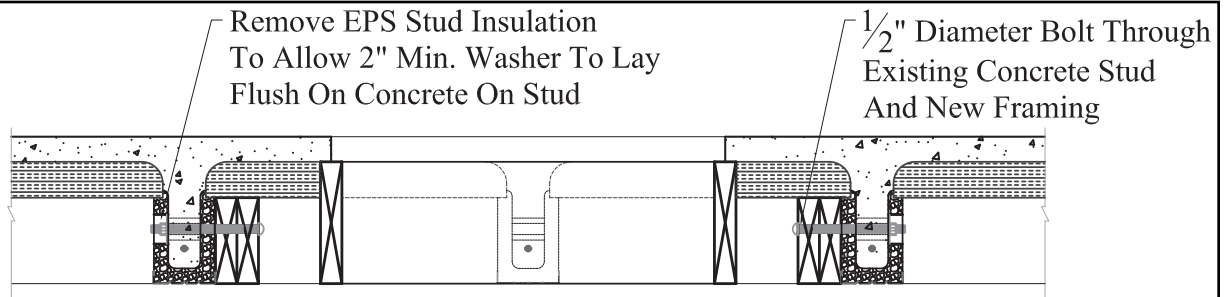
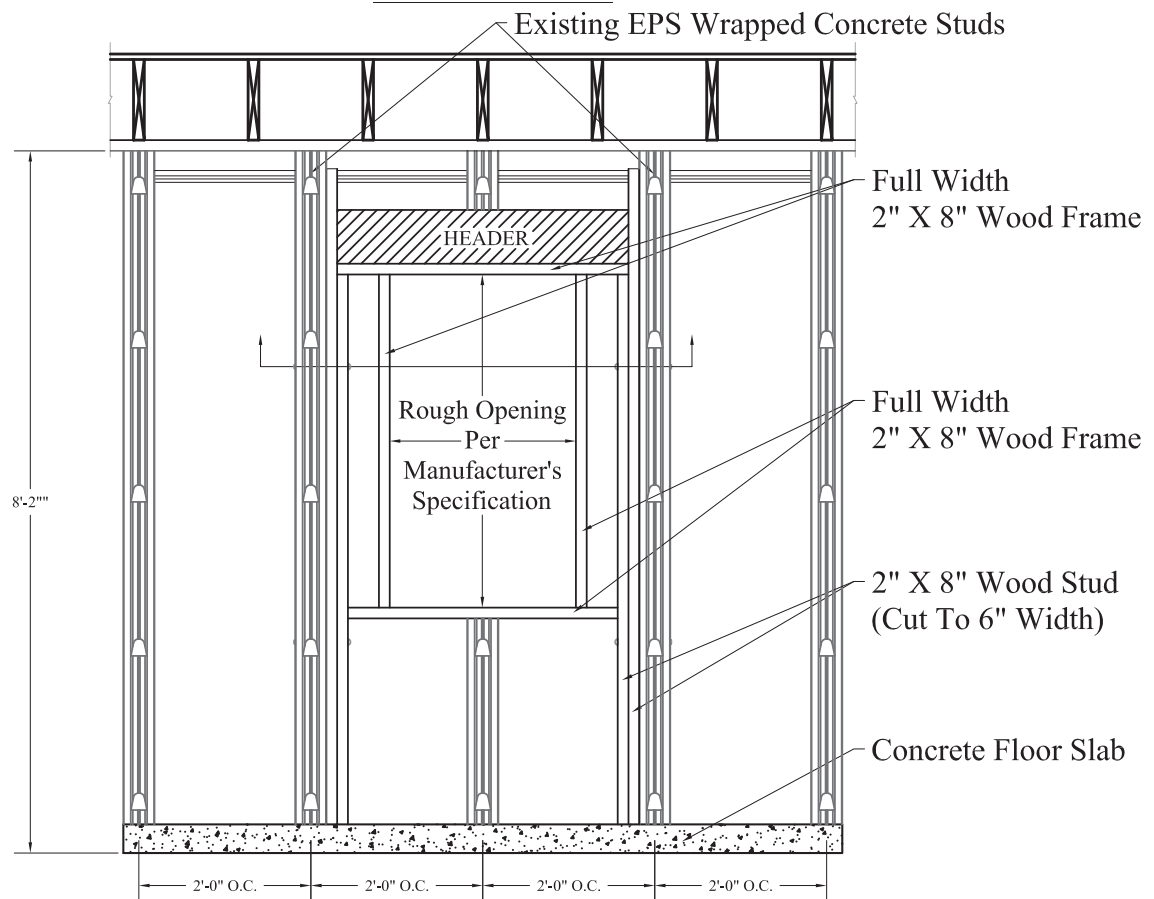


ADDING A WINDOW TO AN Xi WALL

Carefully follow the instructions and cautions listed below when adding a window to an Xi Superior Walls® foundation.



**WINDOW
SECTION VIEW**



ELEVATION

CUTTING A WINDOW OPENING INTO AN Xi WALL

Locate the opening so that only one stud will be cut, and where the band board and sill plate run continuously over the opening. If there is a splice, a properly sized header must be placed above the opening, preferably installed in the floor system above the Superior Wall to stretch across the existing full length concrete studs.** The header can be placed directly above the window opening but must bear on wooden jack studs. Cut wooden framing at a 4 deg angle to fit tightly against top and bottom beam and bolt to existing concrete studs through the precast chase holes. One inch boards can be used to shim between the jamb and the concrete studs. Remove the stud insulation wherever shims are located so that the shims rest directly against the concrete stud. Install the new window according to the manufacturer's specifications.

****Never cut in a door or window opening under a beam pocket or point loaded area.**

****Each job should be individually reviewed by a person competent in applying the structural design principles involved. In many jurisdictions this will require a registered design professional.**